

Crack Injection Adhesive

HM-120L crack injection adhesive is a two-component modified epoxy resin adhesive, low viscosity, flexible ratio, releases less heat, long application period, simple injection process.

▲▲ Advantages

- The density is close to that of water, which could save adhesive material by 10%.
- Low viscosity, good flowability, low permeability, non-shrinkable, can quickly and fully fill cracks infiltration-way.
- It has long pot life (long application time), which is helpful to fill deep and fine cracks, and ensure the quality of the filling.
- Good bond strength, high ductility, ensures long-term adhesion effect of cracks.
- Low sensitivity to humidity ensures good bond effects under any site complex environmental conditions.
- The product has passed several standard tests, including but not limited to the Safety appraisal test, the environmental protection non-toxic detection, the two-amine detection examination, and the acute through the mouth toxicity test.

▲▲ Application Range

This product is widely used in concrete bridges, housing, water conservancy, road and other projects for crack grouting repair, as well as concrete internal honeycomb, loose and other defects such as the reinforcement of plastic injection repair, FRP strengthening of corroded structures, structural surface coating anti-corrosion construction. It is suitable for concrete members, brick and tile member's crevice to restore strength across the cracks through high bond properties.



▲▲ Product Characteristics

- Very strong penetration, low viscosity.
- Durable, acid and alkali corrosion resistance, good water resistance.
- Does not contain any volatile solvent, does not shrink when hardening.
- After curing, it has excellent toughness and shock resistance.

▲▲ Technical Parameters

Physical Parameters

Model	HM-120L Crack Injection Adhesive	
Appearance	Part A: Transparent	
	Part B: Yellow liquid	
Density (g/cm ³)	1.1 ± 0.1	
Mix Ratio (By Weight)	A:B=3:1	
Viscosity (mPa · s)	≤ 300	
Pot Life (min)	Spring&Autumn (23°C)	≤ 50
	Summer (30°C)	≤ 40
	Winter (10°C)	≤ 190
Shelf Life (month)	12	

Performance Parameters

Description	Test items	Test Conditions	Test Result
Adhesive Performance	Tensile Strength (MPa)	ASTM D638	45
	Tensile Elastic Modulus (MPa)		2700
	Elongation at Break (%)		3.5
	Flexural Strength (MPa)	ASTM D790	90
	Compressive Strength (MPa)	ASTM D695	60
	Unconstrained Linear Shrinkage Rate (%)	7 days after pouring, tested under (23 ± 2) °C conditions	
Bonding Performance	Steel-steel Shear Bonding Strength (MPa)	7 days after pouring, tested under (23 ± 2) °C, (50 ± 5)% RH conditions	≥ 15
	Steel-steel Normal Bonding Strength (MPa)		≥ 20
	Pulling Bonding Strength of Steel to Dry-state Concrete (MPa)		≥ 2.5, Concrete cohesion Failure
	Pulling Bonding Strength of Steel to Wet-state Concrete (MPa)		≥ 1.8, Concrete cohesion Failure



▲▲ Operation Process

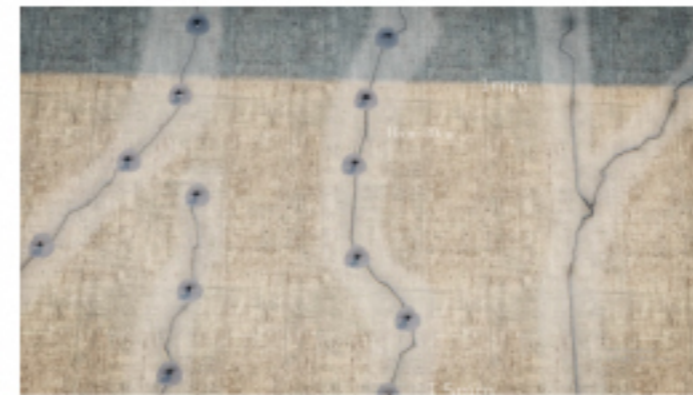
Please scan the QR code to watch the video



surface treatment



crack treatment



setting nozzles



sealing crack



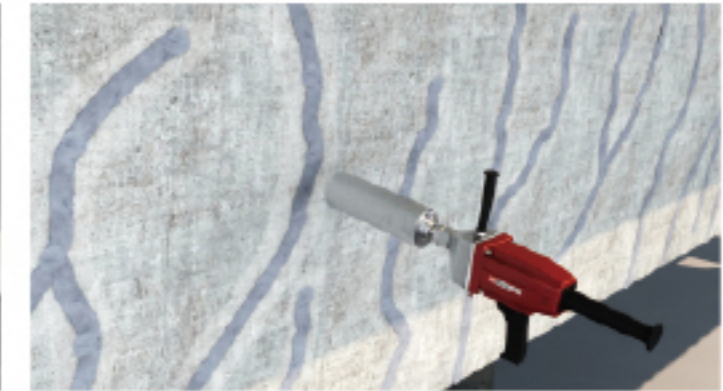
sealing inspection



mixing adhesive



injecting



final test

▲▲ Transportation and Storage

- This product should be kept sealed and stored in a dry and clean storage space of ambient temperature between -5 °C and 40 °C. In order to prevent damage, do not store outdoor under direct sunlight or under direct rain.
- A & B components should be kept separately. Shelf life is 12 months at room temperature (25 °C). Product should be tested if exceeded the shelf life. If the physical and mechanical properties after 12 months meet the standard requirements, then it could be used.
- These products are not inflammable, explosive, toxic, or dangerous cargoes. They could be transported with general transportation cargo. The epoxy containers should not be damaged, exposed to direct sunlight or rain, and should not be tilted or stored upside-down during transportation.

▲▲ Package

The A and B components of this product are packed in separate containers. Group A is 15kg/container and Group B is 5kg/container.

▲▲ Points for Attention

- The mixed Components A & B adhesive shall not be used beyond its pot life (application period).
- Unused A & B components of the adhesive, please seal the containers well, don't expose to air for a long period of time.

▲▲ Safety Measures

- Construction personnel should take safety protection measures (such as wearing masks, gloves, goggles, etc.), on-site attention to fire prevention measures, and maintenance well-ventilated work space.
- If accidentally got in touch with skin or clothing, immediately wipe clean with acetone and rinse with a large amount of water.
- If accidentally swallowed or splashed onto eye, please seek immediate medical attention.